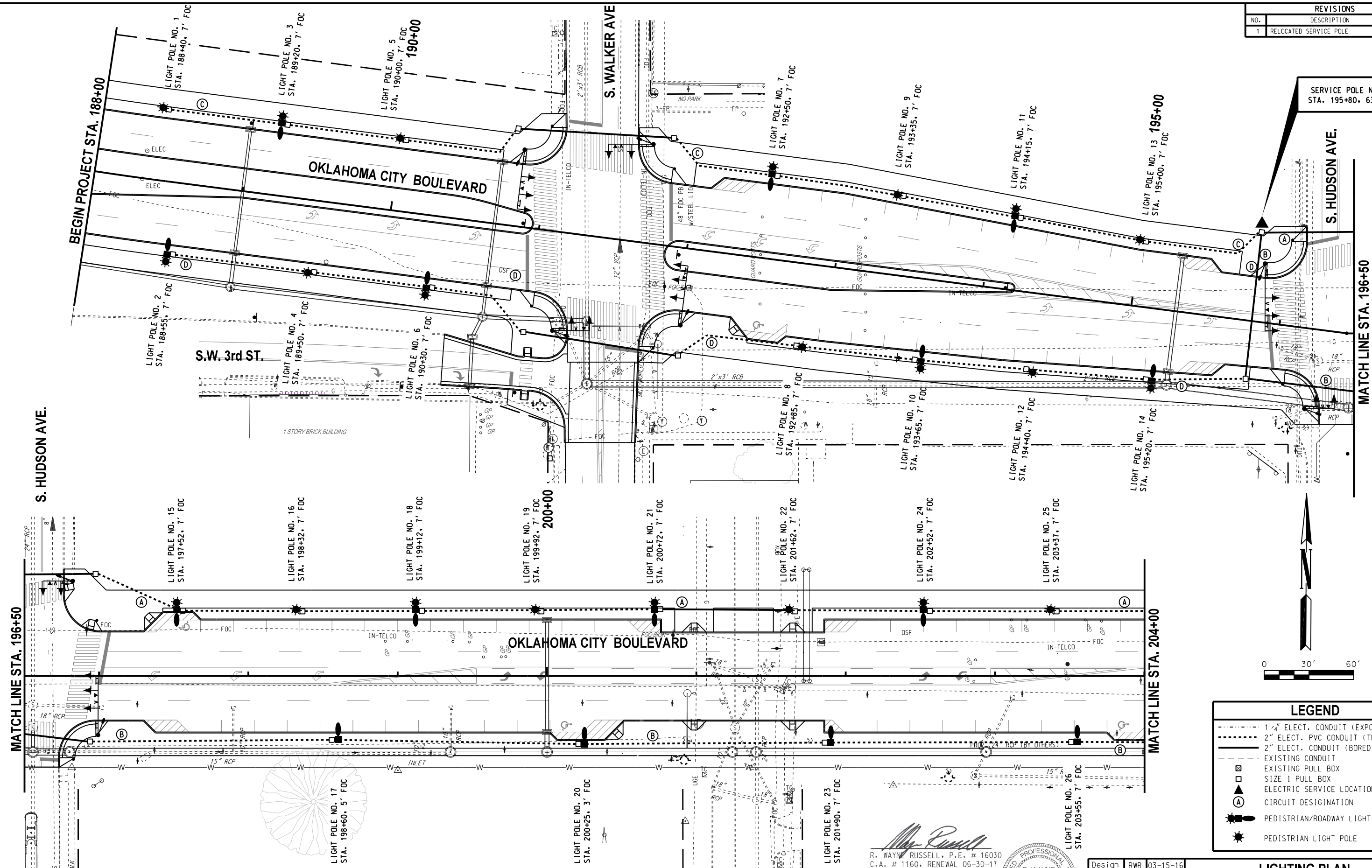
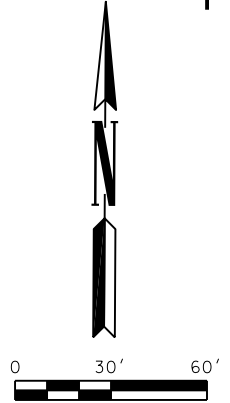


03-15-16 G:\0\Projects\1-24178 Downtown Blvd WP 5.C Task 6.CAD\LIGHT BOULEVARD 1REV.dgn

REVISIONS		
NO.	DESCRIPTION	DATE
1	RELOCATED SERVICE POLE	03-15-16

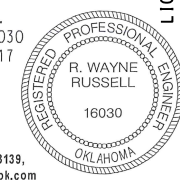


SERVICE POLE NO. 1
STA. 195+80, 63' LT



LEGEND	
	1/2" ELEC. CONDUIT (EXPOSED)
	2" ELEC. PVC CONDUIT (TRENCHED)
	2" ELEC. CONDUIT (BORED)
	EXISTING CONDUIT
	EXISTING PULL BOX
	SIZE 1 PULL BOX
	ELECTRIC SERVICE LOCATION
	CIRCUIT DESIGNATION
	PEDISTRIAN/ROADWAY LIGHT POLE
	PEDISTRIAN LIGHT POLE

R. Wayne Russell
R. WAYNE RUSSELL, P.E. # 16030
C.A. # 1160, RENEWAL 06-30-17



11-13-15
DATE

Traffic Engineering Consultants, Inc.
6000 S. Western, Suite 300 - Oklahoma City, OK 73139,
Ph: 405-720-7721, Fax: 405-720-9848, Web: www.tecok.com

Design	RWR	03-15-16
Drawn	SB	03-15-16



LIGHTING PLAN
OKLAHOMA CITY BOULEVARD
(1 OF 2)

State Job No. 17428(89) Sheet No. T21